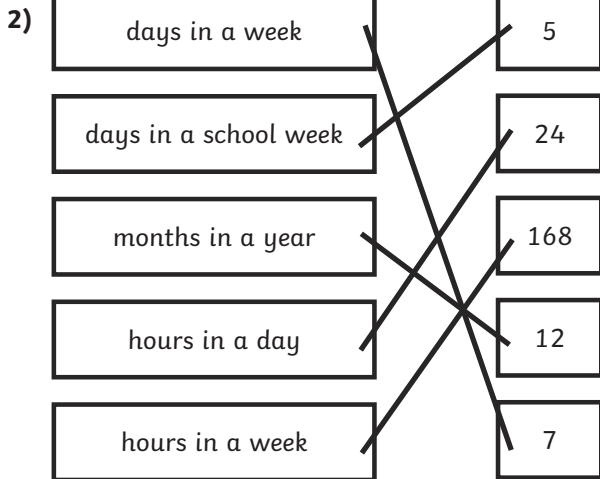




1) morning, midday, afternoon, evening, midnight



3)

a) 1 day = 24 hours

2 days = 48 hours

4 days = **96** hours

10 days = **240** hours

b) 1 week = 7 days

2 weeks = **14** days

4 weeks = 28 days

30 weeks = **210** days

4) 12 days

1) Felix is incorrect. He thought that there are 12 hours in a day instead of 24.

2)

a) The month is February. Children may reference that it must be February because there are 28 days.

b) There are 3 full school weeks in this month. The other two school weeks have only 2 or 3 days in this month.

3) Abi is incorrect as she thought that there were 5 days in a week instead of 7. She multiplied 5 by 24 to get to the answer of 120 hours. Her birthday is actually in 168 hours.

4) Bartek is incorrect. He is awake for 11 hours and asleep for 13 hours.



- 1) Hari - art camp
 Priya - gardening camp
 Jia - football camp
 Drew - rugby camp

2) They walked for 100 hours altogether which is 4 days and 4 hours.



Days and Hours



1) Order these events from earliest to latest..

evening	midnight	midday	afternoon	morning

2) Match the description to the correct number.

days in a week	5
days in a school week	24
months in a year	168
hours in a day	12
hours in a week	7

3) Fill in the missing numbers.

a) 1 day = 24 hours

days = 48 hours

4 days = hours

10 days = hours

b) 1 week = 7 days

2 weeks = days

weeks = 28 days

30 weeks = days

4) There are 5 days in a school week. What is the difference in the number of days in 6 school weeks compared to 6 whole weeks?



for

Days and Hours



1) Do you agree with Felix? Explain your reasoning.



I woke up at 8 a.m. and went to bed at 8 p.m. so I was awake for a full day.

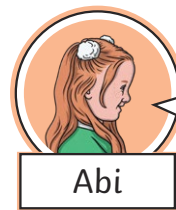
2) Here is a calendar.

Mo	Tu	We	Thu	Fri	Sat	Su
			1	2	3	4
5	6	7	8	9	10	11
12	13	14	15	16	17	18
19	20	21	22	23	24	25
26	27	28				

a) What month is it? Explain how you know.

b) How many full school weeks are in this month? Explain how you know.

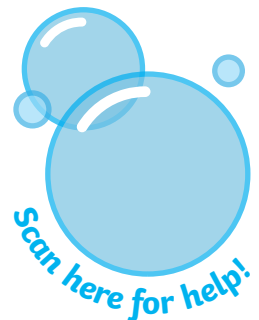
3) Abi is working out how many hours it is until her birthday. Is Abi correct? Explain your reasoning.



It is one week until my birthday so my birthday is in 120 hours.

4) A class in year 3 are discussing time. Do you agree with Bartek? Explain your reasoning.

If I wake up at 9 o'clock in the morning and go to sleep at 8 o'clock at night, I am asleep longer than I am awake.



Days and Hours



1) Use the clues to work out which holiday camp each child attends.

football camp
24 hours

gardening camp
5 days

rugby camp
48 hours

art camp
3 days

I will spend 72 hours at my camp.



Hari

My camp runs for the longest amount of time.



Priya

My camp runs for the shortest amount of time.



Jia

My camp runs for one day less than Hari's.



Drew

2) Three children take part in a sponsored walk for charity. Find out how long they spent walking altogether. Write your answer in days and hours.



Abi

For 3 weeks, I walked for 1 hour every Tuesday and 2 hours every Sunday.

I walked for 71 hours in total.



Amrit



Zeke

I walked for 2 hours every school night for 2 weeks.



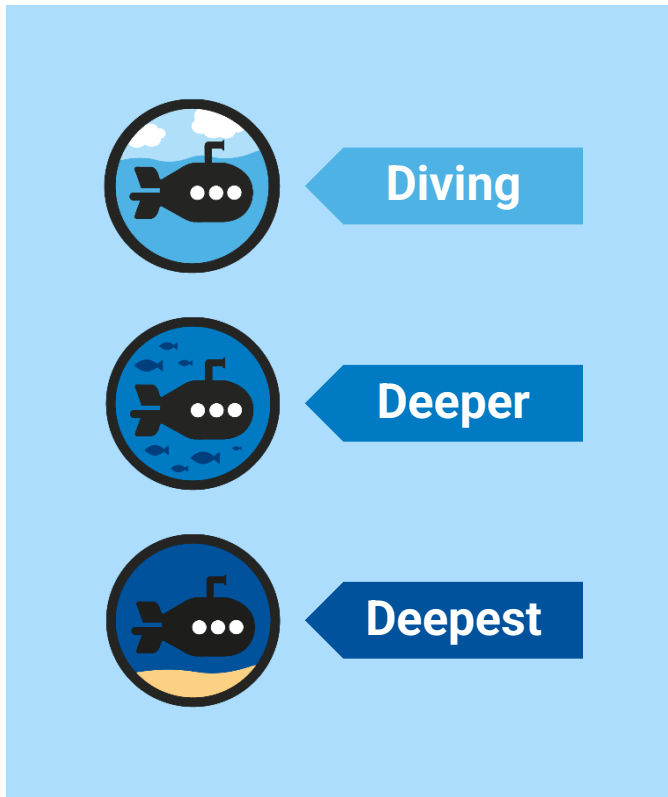
Diving into Mastery



Days and Hours

Diving into Mastery Guidance for Educators

Each activity sheet is split into three sections, diving, deeper and deepest, which are represented by the following icons:



These carefully designed activities take your children through a learning journey, initially ensuring they are fluent with the key concept being taught; then applying this to a range of reasoning and problem-solving activities.

These sheets might not necessarily be used in a linear way. Some children might begin at the 'Deeper' section and in fact, others may 'dive straight in' to the 'Deepest' section if they have already mastered the skill and are applying this to show their depth of understanding.

National Curriculum Aim

- Know the number of seconds in a minute and the number of days in each month, year and leap year



Match the description to the correct number.

hours in a week

5

days in a school week

24

days in a week

12

hours in a day

168

months in a year

7



Fill in the missing numbers.

$$1 \text{ day} = 24 \text{ hours}$$

$$2 \text{ days} = 48 \text{ hours}$$

$$3 \text{ days} = 72 \text{ hours}$$

$$96 \text{ hours} = 4 \text{ days}$$

$$5 \text{ days} = 120 \text{ hours}$$

$$10 \text{ days} = 240 \text{ hours}$$

$$1 \text{ week} = 7 \text{ days}$$

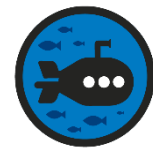
$$2 \text{ weeks} = 14 \text{ days}$$

$$3 \text{ weeks} = 21 \text{ days}$$

$$4 \text{ weeks} = 28 \text{ days}$$

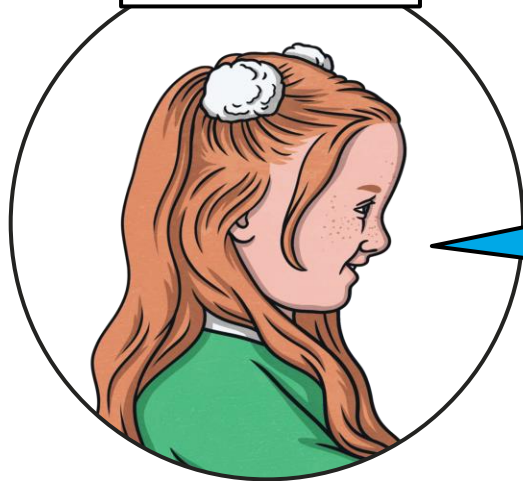
$$10 \text{ weeks} = 70 \text{ days}$$

$$30 \text{ weeks} = 210 \text{ days}$$



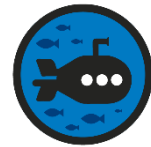
Abi is working out how many days it is until her birthday.
Is she correct? Explain your reasoning.

Abi



It is 3 weeks until my birthday so my birthday is in 15 days.

Abi is incorrect as she has mistakenly thought that there are 5 days in a week. There are 7 days in a week so her birthday is in 21 days.



Do you agree with Felix? Explain your reasoning.

Felix



I go to bed at 7 p.m. and wake up at 7 a.m so I am asleep for a full day.

You should disagree with Felix. He thought that there are 12 hours in a day instead of 24.

Days and Hours

Deepest



Use the clues to work out which holiday camp each child attends.

cooking camp
7 days

athletics camp
144 hours

knitting camp
4 days

gardening camp
5 days

Hari



I will spend 96 hours at my camp.

knitting camp

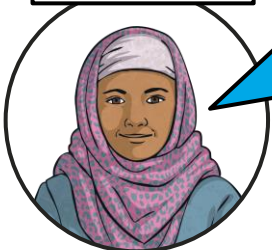
Jia



My camp runs for 120 hours.

gardening camp

Priya



My camp runs for the second longest amount of time.

athletics camp

Drew

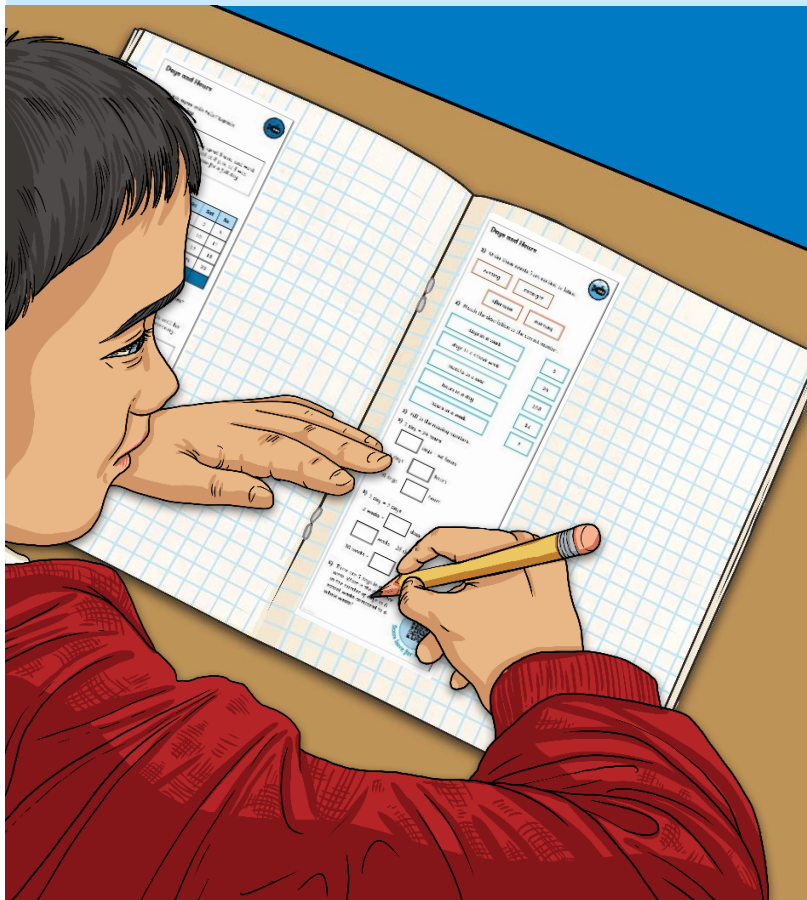


My camp runs for one day more than Priya's.

cooking camp

Days and Hours

Dive in by completing your own activity!



Days and Hours

1) Use the information to complete the table.

Football match starts at 7.30 and lasts for 24 minutes.

I will be home at 6.30.

My order for the amount of money I need to buy 5 items is £12.19.

My order for the amount of money I need to buy 2 items is £26.20.

My order for the amount of money I need to buy 3 items is £...

2) Three children are walking to school.

Days and Hours

1) Do you know what time Felix goes to school? Write it in the box.

Mo	Tu	We	Th	Fr	Sa	Su
5	6					
12	1					
19	2					
26	2					

2) Here is Felix's timetable. Write the time he starts school in the box.

3) Abi is walking to school. Write the time she starts school in the box.

Days and Hours

1) Order these events from earliest to latest.

evening midnight midday afternoon morning

2) Match the description to the correct number.

days in a week	5
days in a school week	24
months in a year	168
hours in a day	12
hours in a week	7

3) Fill in the missing numbers.

a) 1 day = 24 hours

_____ days = 48 hours

4 days = _____ hours

10 days = _____ hours

b) 1 week = 7 days

2 weeks = _____ days

_____ weeks = 28 days

30 weeks = _____ days

4) There are 5 days in a school week. What is the difference in the number of days in 6 school weeks compared to 6 whole weeks?

Scan here for help!

days days da
rs hours hours
lays days days
rs hours h

Days and Hours



1) Order these events from earliest to latest.

evening

midnight

afternoon

morning

2) Match the description to the correct number.

days in a week

5

days in a school week

24

months in a year

168

hours in a day

12

hours in a week

7

3) Fill in the missing numbers.

a) 1 day = 24 hours

days = 48 hours

4 days = hours

10 days = hours

b) 1 week = 7 days

2 weeks = days

weeks = 28 days

30 weeks = days

4) There are 5 days in a school week. What is the difference in the number of days in 6 school weeks compared to 6 whole weeks?



Days and Hours



1) Order these events from earliest to latest.

evening

midnight

midday

afternoon

morning

2) Match the description to the correct number.

days in a week

5

days in a school week

24

months in a year

168

hours in a day

12

hours in a week

7

3) Fill in the missing numbers.

a) 1 day = 24 hours

days = 48 hours

4 days = hours

10 days = hours

b) 1 week = 7 days

2 weeks = days

weeks = 28 days

30 weeks = days

4) There are 5 days in a school week. What is the difference in the number of days in 6 school weeks compared to 6 whole weeks?



Days and Hours



- 1) Do you agree with Felix? Explain your reasoning.



Felix

I woke up at 8 a.m. and went to bed at 8 p.m. so I was awake for a full day.

- 2) Here is a calendar.

Mo	Tu	We	Thu	Fri	Sat	Su
			1	2	3	4
5	6	7	8	9	10	11
12	13	14	15	16	17	18
19	20	21	22	23	24	25
26	27	28				

- a) What month is it? Explain how you know.
 b) How many full school weeks are in this month? Explain how you know.
- 3) Abi is working out how many hours it is until her birthday. Is she correct? Explain your reasoning.



Abi

It is one week until my birthday so my birthday is in 120 hours.

- 4) A class in year 3 are discussing time. Do you agree with Bartek? Explain your reasoning.



Bartek

If I wake up at 9 o'clock in the morning and go to sleep at 8 o'clock at night, I am asleep longer than I am awake.



Days and Hours



- 1) Do you agree with Felix? Explain your reasoning.



Felix

I woke up at 8 a.m. and went to bed at 8 p.m. so I was awake for a full day.

- 2) Here is a calendar.

Mo	Tu	We	Thu	Fri	Sat	Su
			1	2	3	4
5	6	7	8	9	10	11
12	13	14	15	16	17	18
19	20	21	22	23	24	25
26	27	28				

- a) What month is it? Explain how you know.
 b) How many full school weeks are in this month? Explain how you know.
- 3) Abi is working out how many hours it is until her birthday. Is she correct? Explain your reasoning.



Abi

It is one week until my birthday so my birthday is in 120 hours.

- 4) A class in year 3 are discussing time. Do you agree with Bartek? Explain your reasoning.



Bartek

If I wake up at 9 o'clock in the morning and go to sleep at 8 o'clock at night, I am asleep longer than I am awake.



Days and Hours



- 1) Use the clues to work out which holiday camp each child attends.

football camp
24 hours

gardening camp
5 days

rugby camp
48 hours

art camp
3 days



Hari

I will spend 72 hours at my camp.



Priya

My camp runs for the longest amount of time.



Jia

My camp runs for the shortest amount of time.



Drew

My camp runs for one day less than Hari's.

- 2) Three children take part in a sponsored walk for charity. Find out how long they spent walking altogether. Write your answer in days and hours.

I walked for 2 hours every school night for 2 weeks.



Abi

I walked for 71 hours in total.

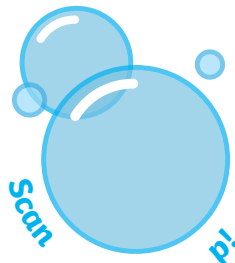


Amrit



Zeke

For 1 week, I walked for 1 hour every weekday and 4 hours at the weekend.



Scan

PI

Days and Hours



- 1) Use the clues to work out which holiday camp each child attends.

football camp
24 hours

gardening camp
5 days

rugby camp
48 hours

art camp
3 days



Hari

I will spend 72 hours at my camp.



Priya

My camp runs for the longest amount of time.



Jia

My camp runs for the shortest amount of time.



Drew

My camp runs for one day less than Hari's.

- 2) Three children take part in a sponsored walk for charity. Find out how long they spent walking altogether. Write your answer in days and hours.

I walked for 2 hours every school night for 2 weeks.



Abi

I walked for 71 hours in total.

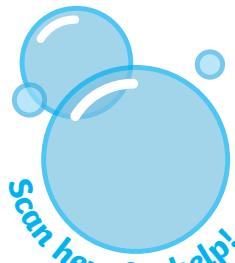


Amrit



Zeke

For 1 week, I walked for 1 hour every weekday and 4 hours at the weekend.



Scan here for help!